

Dinosaurs

Reason and inspiration

Over the past 200 years the fossilised remains of the skeletons of the dinosaurs featured in this issue have been found in the UK, mostly in southern Britain – hence they are ‘British’ dinosaurs.

Dinosaurs have not appeared on stamps since 1991 and as they are a perennially popular subject, especially with children, an examination of how they may have looked was considered to be a popular approach, but one that had to be backed up by science. The stamp designs in this issue are printed such that the creatures ‘break out’ of the self-adhesive stamp frame, so there is not a clean straight edge to the stamp.

The following dinosaurs feature on the stamps:

- Polacanthus
- Ichthyosaurus
- Iguanodon
- Ornithocheirus
- Baryonyx
- Dimorphodon
- Hysilophodon
- Cetiosaurus
- Megalosaurus
- Plesiosaurus

John Sibbick was selected from a number of expert artists as he is one of the foremost illustrators of dinosaurs and has decades of experience. It was felt that Sibbick’s painterly approach gave a more detailed realisation of the animals than tests with computer generated imagery at stamp size.

Dr Angela Milner of the Natural History Museum, London, was the consultant for this issue, and advised on the species and the accuracy of the final images to be reproduced on stamps.

There is very strong regional connection with Dorset (due mainly to discoveries by pioneering fossil hunter Mary Anning).

The 1999 BBC TV series Walking with Dinosaurs was a ratings hit and subsequent TV series have been equally successful indicating the public interest in these creatures (it is estimated more than 700 million people have seen the TV series). The live show of Walking With Dinosaurs featuring animatronic creatures has been seen by more than 8 million people.

The 3D movie version of Walking With Dinosaurs will be released in cinemas in December 2013. This is a BBC co-production, distributed by 20th Century Fox. The film takes the form of a narrative story following a group of dinosaurs rather than being a natural history type production. Macmillan Children’s Book is publishing a tie in book.

Dinosaurs is also part of the National Curriculum for schools at Key Stage 2.

Dinosaurs

Stamp details

Value	Description
1st Class	Polacanthus
1st Class	Ichthyosaurus
1st Class	Iguanodon
1st Class	Ornithocheirus
1st Class	Baryonyx
1st Class	Dimorphodon
1st Class	Hypsilophodon
1st Class	Cetiosaurus
1st Class	Megalosaurus
1st Class	Plesiosaurus

Stamp by stamp

Ornithocheirus
(Or-nith-oh-kee-rus) - Bird Hand

The lightweight Ornithocheirus flew mostly by soaring and gliding on its long, narrow wings. It fed by skimming the sea surface and catching fish with its long, slender jaws fringed with sharp, outwardly pointing, interlocking teeth.


Polacanthus
(Pol-a-kan-thus) - Many Spines

Known from only two partial skeletons lacking skulls, the heavily armoured Polacanthus was protected against predators by spikes and studs along the body and a heavy hip shield composed of flat, interlocking, bony plates.


Iguanodon
(Ig-wha-noh-don) - Iguana Tooth

Once portrayed in a kangaroo-like pose, Iguanodon had forelimbs much shorter than its hind limbs. Recent research shows it could stand or walk on all fours, but ran bipedally.


Ichthyosaurus
(Ick-thee-owe-sore-us) - Fish Lizard

Adapted to life in the seas, Ichthyosaurus breathed air and gave birth to live young in the water. Its lifestyle paralleled that of the modern dolphin, except that its tail flukes were vertical rather than horizontal.



Dinosaurs

Stamp by stamp

Dimorphodon

(Die-mor-foh-don) - Two-form Tooth

The two different sizes of teeth in the jaws of Dimorphodon suggest that it was piscivorous (a fish-eater). It had a large, puffin-shaped skull, with big side openings supported by thin, bony struts to save weight.



Baryonyx

(Bar-ee-on-icks) - Heavy Claw

The thumb claw of Baryonyx measured 32cm round the outside curve. In life the claw was covered by a horny sheath, making it more than 40cm long – equivalent to the length of a UK size-15 shoe.



Hypsilophodon

(Hip-sil-oh-foh-don)

- High-ridge Tooth

With a short thigh and long shin, hind-limb proportions of Hypsilophodon indicate that it was agile and fast, its only defence from predators.



Cetiosaurus (Set-ee-owe-sore-us)

- Whale Lizard

The large, dense bones of Cetiosaurus were originally thought to belong to a whale, hence the name which means 'whale lizard'. Its thigh bone was about 2m long. Cetiosaurus' maximum weight was equivalent to 20 small cars.



Megalosaurus

(Meg-ah-low-sore-us) - Big Lizard

An exceptional Megalosaurus trackway discovered in Ardley Quarry, Oxfordshire, in 1997 records an individual crossing an ancient mudflat at an increasing pace, leaving prints measuring 80cm long and 60cm wide.



PLESIOSAURUS

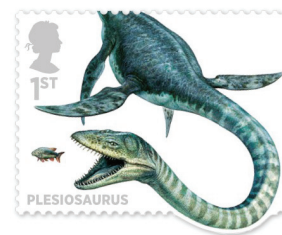
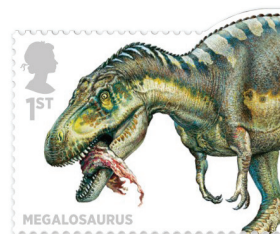
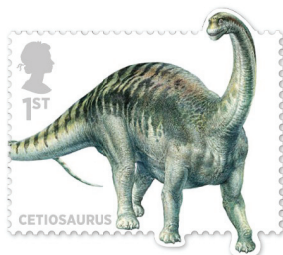
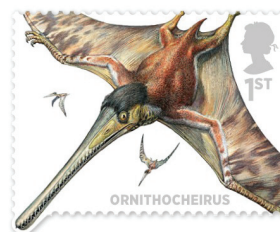
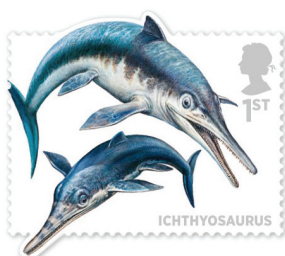
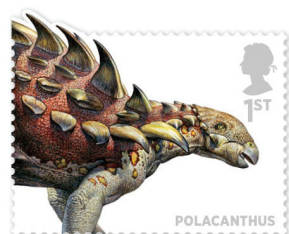
(Plee-zee-owe-sore-us) - Near Lizard

Plesiosaurus had a very small head on the end of a long and flexible neck, and a rigid barrel-shaped body to brace the paddles. It swam like sea turtles and penguins, the paddles moving in an underwater figure-of-eight flying motion. At an estimated 8kph it would have been fast enough to leave an Olympic freestyle swimmer in its wake.



Date of issue: 10 October 2013

Dinosaurs



Technical details:

Issue date:

10 October 2013

Stamps:

Ten

Design:

Why Not Associates

Stamp Format:

Landscape

Stamp Size:

37mm x 27mm excluding protrusions

Printer:

Walsall Security Printers

Print Process:

Gravure

Sheet size:

115mm x 89mm

Perforations:

13.5 x 14

Phosphor:

All over

Gum:

Self-adhesive

Number Per Sheet:

25/50

Acknowledgements:

Illustrations John Sibbick

Dinosaurs

Product portfolio

Presentation Pack
No. 490

On sale: 10 October 2013
Price £6.50



First Day Cover with Filler Card

On sale: 10 October 2013
Mail order price: £7.68

First Day Envelope

On sale: 10 October 2013
Mail order price: 30p

Stamp Cards

On sale: 10 October 2013
Price: £4.50



Handstamps

As an alternative to the Tallents House, Edinburgh postmark, pictorial and non-pictorial (plain design) Lyme Regis, Dorset postmarks will also be available for this issue.

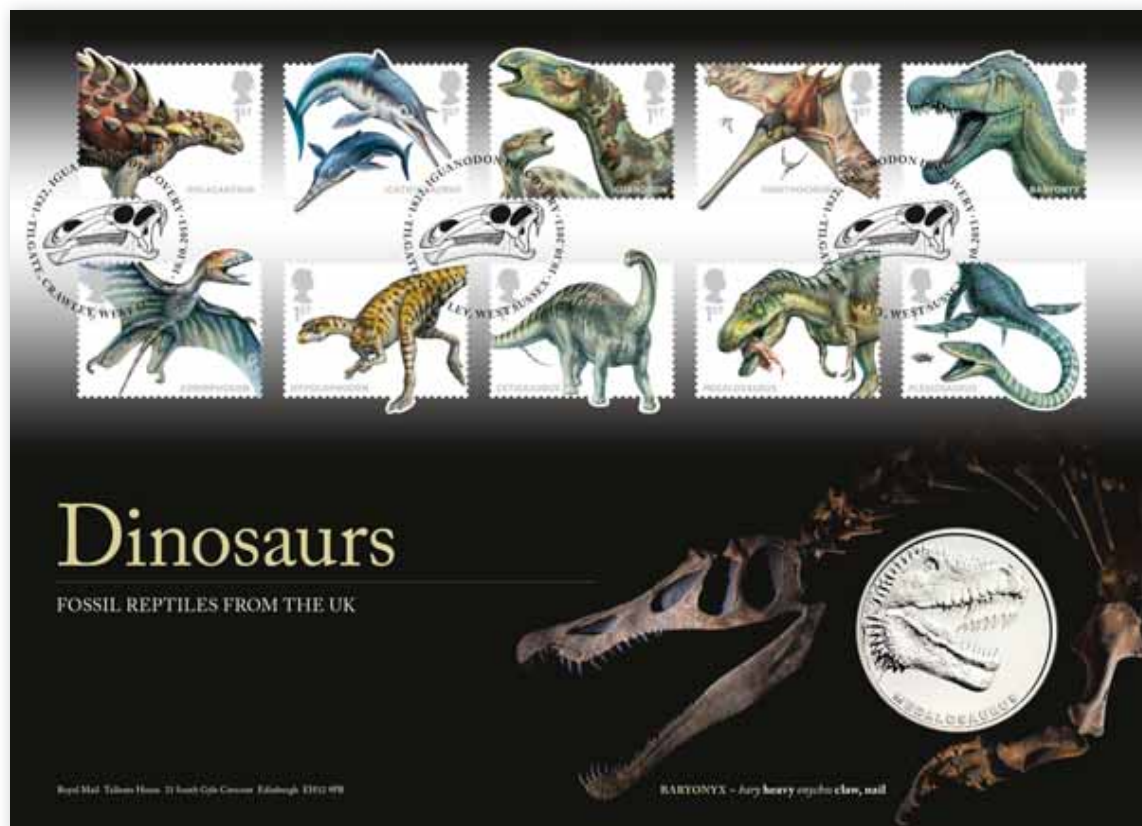
Lyme Regis is located on the Dorset coast, and forms part of the Jurassic Coast - World Heritage Site. Dinosaur fossil finds, both high in number and in quality, have been found here over the past two centuries and have led to Lyme Regis being regarded as one of the most famous fossil locations in the world.

- 1 Lyme Regis, Dorset, Pictorial, FD1321TH
- 2 Tallents House, Pictorial, FD1321TH
- 3 Lyme Regis, Dorset, Non-Pictorial, FD1321NP



Date of issue: 10 October 2013

Dinosaurs Medal Cover



This 9,000 limited-edition, individually numbered Medal Cover features all ten stamps from the 'Dinosaurs' set cancelled with a special postmark.

It also contains a medal specially produced by the Royal Mint showing the head of a Megalosaurus – one of the dinosaurs that appears in the stamp set. Inside is a detailed and beautifully illustrated insert card which looks in depth at the discoveries of the various dinosaurs featured on the stamps as well as other fossil reptiles.

It also explains how dinosaurs are reconstructed based on fossil remains using both traditional and digital techniques which combined are bringing new realism to dinosaur movement and behaviour. You will also learn about the geology of the earth and Great Britain over the past 252 million years including the Mesozoic Era which is also often referred to as the 'Age of Reptiles' when dinosaurs were dominant.

Retail Price: £14.95

Product Code: AM035

Wholesale Prices:

5-500 £8.70 each

501-999 £7.52 each

1000+ £6.90 each

